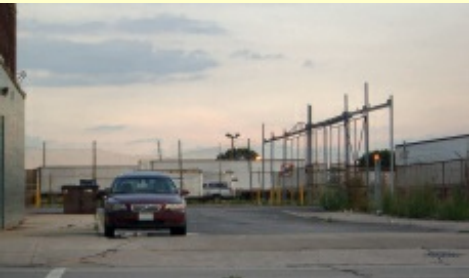


McKinley Park on the north side of Pershing



View of site from Pershing facing south

KEY STATS:

PIN: 20-06-100-066-0000

Area: 0.36 acres, 15,680 square feet

Frontage: 50 feet

Zoning: M2-3

Information is offered as a courtesy and should not be presumed to be exhaustive. Interested parties are urged to seek independent professional advice.

All information in this website is proprietary. Unauthorized reproduction and/or dissemination without prior permission from Schmidt Group Inc. is forbidden.

Asking Price

Introduction :

A unique opportunity for sophisticated real estate investors to acquire a strategic parcel in the prime location of McKinley Park, an area that is experiencing explosive growth.

Since you, the visitor, found your way here, we assume you must be already familiar with the general area and the potential of this property. We will not waste your time by citing population statistics and growth trends in the McKinley Park area. This website is created for only one purpose: to provide useful information to you in your evaluation of this property.

Background of the property

This property, commonly known as 2033 West Pershing Road, Chicago, Illinois, is listed for sale through the Northern Illinois Multiple Listing Service. Schmidt Group Inc., the listing broker of the property, is also the owner.

The information above has been obtained from sources believed reliable. While we do not doubt its accuracy we have not verified it and make no guarantee, warranty or representation about it. It is your responsibility to independently confirm its accuracy and completeness. Any projections, opinions, assumptions, or estimates used are for example only and do not represent the current or future performance of the property. The value of this transaction to you depends on tax and other factors which should be evaluated by your tax, financial, and legal advisors. You and your advisors should conduct a careful, independent investigation of the property to determine to your satisfaction the suitability of the property for your needs.